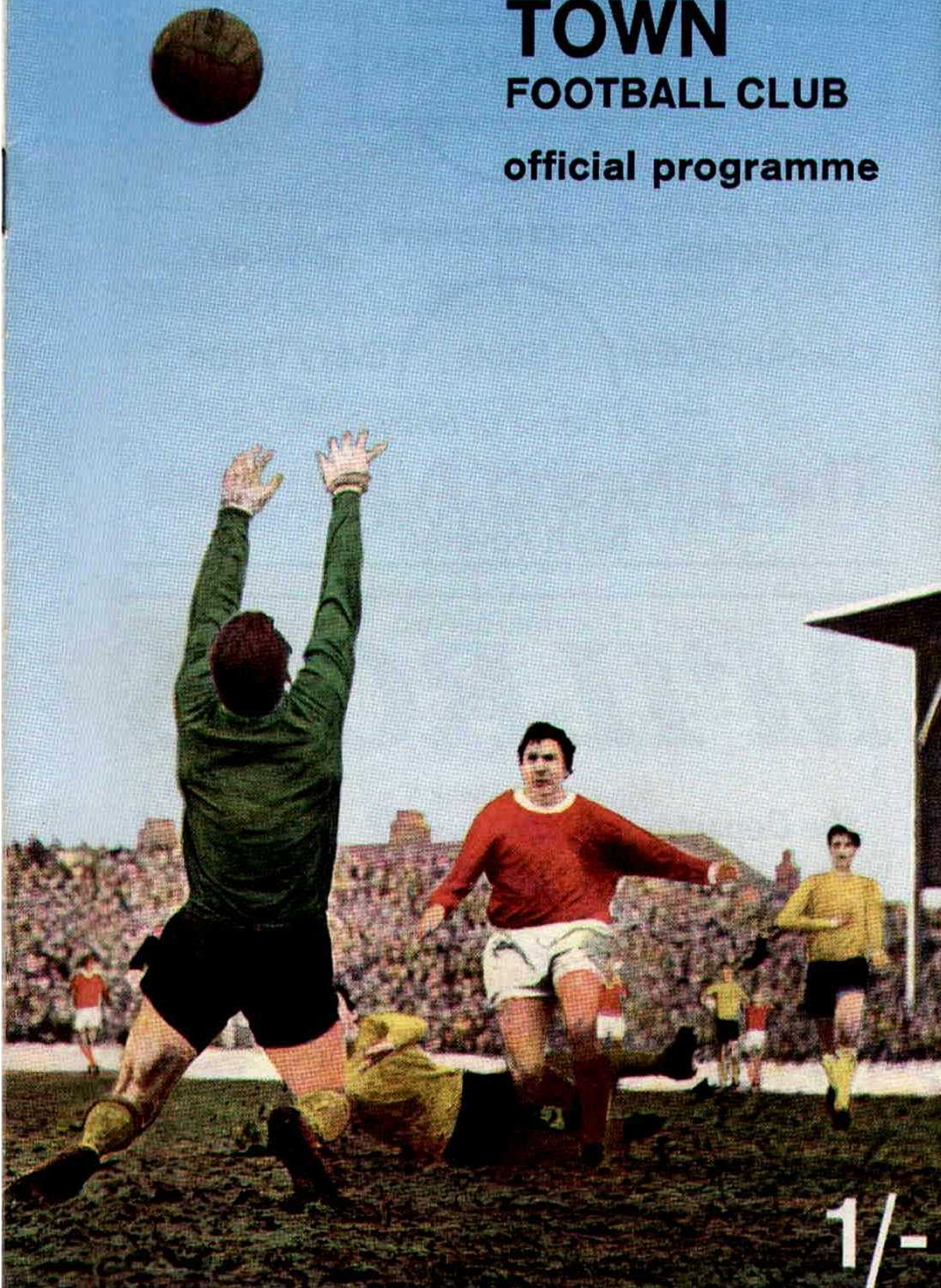


# SWINDON TOWN

FOOTBALL CLUB

official programme

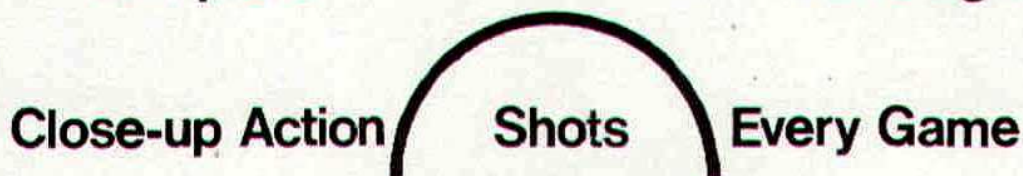


1/-





Complete Comprehensive Coverage



At home or away

**The Evening Advertiser**  
has it covered

---

---

# **M<sup>c</sup>ILROYS**

*the Department Store*  
*with that something extra* ***Service!***

***Free***

DELIVERIES  
ESTIMATES ON CARPETS & CURTAINS  
CARPET FITTING

**WILLIAM McILROY (Swindon) LTD.**

**Tel. 5294**

---





# SWINDON TOWN FOOTBALL COMPANY LIMITED

Registered Office: COUNTY GROUND, SWINDON

**President:** Mr. W. J. CASTLE

**Vice-President:** Mr. J. DAVIES

**Directors:**

**Chairman:** Mr. H. E. LANE

**Vice-Chairman:** Mr. R. FRICKER

Messrs. F. L. COLLINGS, A. W. DONE, M. EARLE, C. J. GREEN, F. PLYER,  
H. WILLIAMS, K. H. WILMER and Dr. J. NICHOLAS

**General Manager:** Mr. R. A. MORSE

**Team Manager:** Mr. F. FORD

**SATURDAY, 13th SEPTEMBER, 1969**

**Division II**

## SWINDON v OXFORD UNITED

**Kick-off 3 p.m.**

SWINDON TOWN	OXFORD UNITED	OFFICIALS
1 Downsborough	1 Barron	<b>REFEREE:</b> Mr. A. W. S. Jones Ormskirk
2 Thomas	2 Lucas	
3 Trollope	3 Shuker	
4 Butler	4 Smithson	
5 Blick	5 Kyle	
6 Harland	6 Clarke	
7 Smith	7 Sloan	
8 Horsfield	8 Atkinson G.	
9 Smart	9 Skeen	
10 Noble	10 Jones	<b>LINESMEN:</b>
11 Rogers	11 Atkinson R.	<b>Red Flag:</b> Mr. P. D. Hunter Bexley Heath
12 Jones	12	<b>Yellow Flag:</b> Mr. D. J. Thomas Solihull
Colours: Red and White	Colours: Old Gold and Black	



## *G. A. Streetly*

Tobacconist and Confectioner

10 BOURNE ROAD  
MOREDON SWINDON  
Telephone 4956

## **C. Goodenough and Sons**

Removal and Storage Contractors  
any distance

25 Cricklade Street Swindon  
Telephone 4555 and 3855

## *CECIL GREEN*

Artistic Decorations in all its branches

12 Armstrong Street  
Swindon Wilts  
Telephone 4593

## **W. J. SELWOOD**

Telephone Swindon 5884

### **Saddlery**

General Leather Goods Manufactured and  
Repaired to Your Individual Requirements

103 BROAD STREET  
SWINDON WILTSHIRE

## **Notton's Cafe**

COUNTY ROAD

200 yards from Ground

Perfect meals at all times

For High Class  
Central Heating, Plumbing  
Painting and Decorating  
Electrical Installations  
and Repairs

## **NORTH WILTS Sanitary and Heating Co. Ltd.**

NEWPORT STREET SWINDON  
Telephone 5373/4



THE ALCOHOL FUEL

### **COATE GARAGE**

REPAIRS - OVERHAULS - WELDING  
SERVICING - REBORING - TYRES

Props. E. V. & W. H. Mattick  
Marlborough Road Swindon

## **Leese, Ing & Co. Ltd.**

Mineral Water and  
Squash Manufacturers

LANSDOWN ROAD SWINDON

Telephone 22744

## *Maylott Studios*

For Group and Sports Photographs

Official Photographer to  
Swindon Town Football Club

31 Faringdon Road  
Telephone 22792

Always at your service

## *L. Bibby*

For all Types — Rags, Iron and Metal, etc.  
Spot Cash Paid. Please Telephone 2101  
and our van will call.

THE PADDOCK ERMIN STREET  
STRATTON ST. MARGARET



## news & views

The past week has produced two totally different games, and two opposite results. At Swansea on Tuesday Swindon, especially in the first half, played much below form. Certainly our opponents played strong, hard, attacking football. They were quick to tackle, and never allowed our team to settle in their normal rhythm.

However no panic or agitation in the Swindon ranks, and just on half-time Noble equalised. Maybe he was a little fortunate, as the Swansea defence hesitated to tackle.

The second half was a different story. Swindon showed much more urgency, and played the football of which we know they are capable. Noble's second goal scored thirteen minutes after the interval, was a fine left-foot shot taken on the volley from a corner by Rogers. Ten minutes later he settled the issue, when he ran on to a forward pass by Smart, and hit a right-foot cross shot to the far corner of the net.

The final result was good, but this was not one of our best displays. We took our scoring chances, and might easily have scored another goal when Trollope hit the upright with the goalkeeper completely beaten.

At Blackpool the position was completely reversed. Here we played some of our best football to date. Swindon was by far the better side and deserved to win, but came away with no points and a 2-3 defeat.

Such are the vagaries of football, but we are sure the Swindon supporters at Blackpool enjoyed a grand game, and felt we were most unfortunate to lose. This game aroused great interest in Swindon, and thousands travelled up to see the game, either by train, coach or car. The M6 on Saturday was very much a mass of red and white colours. We certainly enjoy a wonderful following away from home, especially when one considers the return journey last Saturday totalled well over four hundred miles. Most of our supporters arrived home with the milk and newspapers on Sunday morning, but considered it all worth-while.

This afternoon we resume our rivalry with Oxford United. After six encounters since they were promoted from Division 4, Oxford have yet to beat Swindon (we hope it isn't today or 24th September). Of the six matches played Swindon has won two (both 3-0), three have been drawn 0-0, and one 1-1. So Oxford has only scored one goal against us.

In season 1967-68 we played at Oxford on Good Friday before one of their biggest gates of the season, 17,751. Result 0-0, although Swindon missed many scoring chances and should have won. The return game at the County Ground took place on Saturday, 16th April, 1968. Result, one goal each. The game itself was very good, with fast, open, attacking football by both teams. Both sides missed several good scoring opportunities, but G. Atkinson scored for Oxford two minutes after half-time, and it was not until the last minute that Rogers scored for Swindon.

After today's game Swindon face a strenuous programme, with three away matches. On Tuesday we play at Middlesbrough, a very long journey which entails at least two nights away. On Saturday we travel to Queen's Park Rangers, and another very hard game. Then on Wednesday, 24th September, we again meet today's opponents, but this time at Oxford in Round 3 of the Football League Cup.



# THE GREAT WESTERN HOTEL

(OPPOSITE SWINDON RAILWAY STATION)

The business man's hotel with a top class  
steak bar too!

Specialists in  
LUNCHEONS and DINNERS  
WEDDING PARTIES and RECEPTIONS  
good food — quick service

**J. ARKELL and SONS LIMITED Telephone SWINDON 22047**

## Mills and Merricks Limited

**16-17 Bridge Street Swindon**

Telephone 5365/6

**"HOME OR AWAY"**

**our function is to ensure that your home is  
tastefully and economically furnished**

SWINDON'S COMPLETE HOUSE FURNISHERS

### **New City Office Supplies Limited**

*Office and Stationery Suppliers  
to Industry and Commerce  
6 Commercial Road Swindon  
Telephone Swindon (STD Code 0793) 4605*



## CLARK BROS. (Swindon) LTD

Building and Civil Engineering Contractors

CONSULT US FOR  
BUILDING AND CIVIL ENGINEERING  
CONSTRUCTION IN ALL ITS PHASES

**STRATTON ROAD**

**SWINDON**

Telephone Swindon 27261



# our visitors



## OXFORD UNITED

Goalkeepers	Height	Previous Club	Birthplace
Barron, Jim	5ft. 11½ins.	Chelsea	Co. Durham
Kearns, Mick		Banbury Utd.	Banbury
Full-backs			
Gladwin, Robin	5ft. 11ins.	Norwich	Harlow
Lucas, Richard	6ft. 0ins.	Local Amateur	Oxford
Half-backs			
Atkinson, Ron	6ft. 0ins.	Aston Villa	Liverpool
Clarke, Colin	6ft. 1½ins.	Arsenal	Glasgow
Clinch, Peter			
Hatch, Peter	5ft. 10½ins.		
Kyle, Maurice	6ft. 1½ins.	Wolves	
Smithson, Rodney	5ft. 11ins.	Arsenal	Leicester
Forwards			
Atkinson, Graham	5ft. 10½ins.	Aston Villa	Birmingham
Clayton, Roy			
Crook, Leslie			
Evanson, John	5ft. 9½ins.	Towcester	Newcastle-under-Lyne
Gaston, Ray			
Harrington, Colin	6ft. 1in.	Wolves	Oxon
Jones, Davy		Arsenal	
Shuker, John	5ft. 10½ins.	Manchester Am.	Manchester
Skeen, Ken	5ft. 10½ins.	Swindon	
Sloan, David	5ft. 8½ins.	Scunthorpe	Lisbourne, Nr. Belfast

## THE FOOTBALL COMBINATION

Tables of Results to Monday, 8th September, 1969 (not inclusive)

	P	W	D	L	F	A	Points
West Ham United ...	4	4	0	0	13	2	8
Cardiff City ...	4	4	0	0	11	5	8
Ipswich Town ...	4	3	1	0	13	3	7
Tottenham Hotspur ...	4	3	1	0	7	3	7
Reading ...	3	3	0	0	6	2	6
Queen's Park Rangers ...	5	2	1	2	10	7	5
Swansea Town ...	3	2	1	0	2	0	5
Southampton ...	4	2	1	1	11	6	5
Norwich City ...	5	2	1	2	7	4	5
Bristol City ...	5	2	1	2	10	9	5
Leicester City ...	5	2	1	2	11	10	5
Chelsea ...	5	2	0	3	7	8	4
Arsenal ...	4	1	2	1	7	4	4
Luton Town ...	4	1	2	1	8	7	4
Bournemouth & B.A. ...	4	0	4	0	5	5	4
Birmingham City ...	4	1	2	1	6	7	4
Oxford United ...	4	2	0	2	6	8	4
Plymouth Argyle ...	4	2	0	2	5	7	4
<b>Swindon Town</b> ...	<b>5</b>	<b>1</b>	<b>1</b>	<b>3</b>	<b>6</b>	<b>9</b>	<b>3</b>
Bristol Rovers ...	5	1	1	3	5	9	3
Gillingham ...	5	1	1	3	7	12	3
Fulham ...	5	0	2	3	2	6	2
Crystal Palace ...	3	0	1	2	5	8	1
Peterborough United ...	4	0	0	4	4	13	0
Walsall ...	4	0	0	4	4	15	0
Northampton Town ...	2	0	0	2	1	10	0



WE AIM TO PLEASE — TRY US

# Tunleys

(1)

Glass (2)      Wallpaper (3)

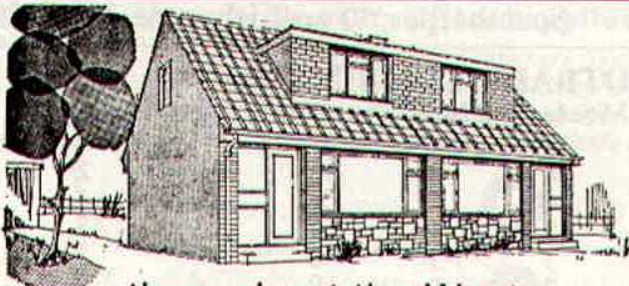
Paint (4)      Polishes (5)      Artist Materials (6)

Prints (7)   Ladders (8)   Mirrors (9)   Brushes (10)   Aladdin Heaters (11)

MEMBERS OF THE



12/13 Gloucester Street Swindon Wiltshire



throughout the West

you will find Bradley Estates beautifully situated to meet the requirements of modern living. If you are thinking about a new home and would like to receive full details of our current and planned estates write now to 74 Victoria Road Swindon Wiltshire. Please send me details of

- Green Meadow Estate, Swindon, Wiltshire
- Nythe Estate, Swindon, Wiltshire
- Monkton Park Estate, Chippenham, Wiltshire
- Park Hill Estate, Frome, Somerset
- Damory Down Estate, Blandford Forum, Dorset
- Harkwood Farm Estate, Poole, Dorset
- Roman Way Estate, Bourton-on-the-Water, Gloucestershire

Name.....

Address.....



## BRADLEYESTATES



## Supporters' Club Notes

At the time of writing these Notes, the return match with A.S. Roma was still 24 hours away, but by now the result will be past history, but, as with all history, no doubt lessons were learned which will be valuable in the future. The Football Club, in its first venture into modern, competitive European football, will have had experience in the cost of administrating such games and, no doubt, will have found that success brings its own problems, which are almost always allied to expense. Supporters, I hope, will have seen a memorable game — which they might reasonably expect bearing in mind that Roma are one of the top European Clubs.

Not being bothered with high finance, and only interested in doing their best for nothing, the Supporters' Club Football Sections started their season last Sunday in grand style. The Supporters' Club team, now in Division II of the Swindon Sunday League, won away, beating Old Headlandians 3—0. The Social Club Football Section, now in Division IV, beat Garrards at home 3—2. Not to be outdone, West Swindon Thistles — whose social centre can be said to be the Social Club — started off in Division I by beating Radio Rentals, away, 5—1. Should all three finally arrive in Division I, then these Notes might well require a professional diplomat, instead of an amateur scribe, to write them. Life could be full of interest, not to mention a Social Club full of trophies.

The Darts Section of the Social Club has expanded by forming a "B" team, which will join Big Brother "A" in the Independent Clubs Darts League. Last Monday saw a friendly fixture between the two in the Social Club, in which the "B" team, with the brashness of youth, and with no respect for age or beauty, beat the "A" team 4—2, according to my informant.

Supporters welcome this afternoon Oxford United (and Ken Skeen perhaps) in our nearest local derby. No doubt many will be paying a return visit to Oxford when we joust in the Football League Cup a week or two hence, provided tickets can be obtained, for Oxford does not boast the largest of grounds. Neither game will be an easy one to win but, as Stan Harland said in this season's Handbook, with the sort of support — vocal, of course — that Swindon supporters can produce, success can be achieved in both. Incidentally, the Handbooks are now available in our Kiosk by the Social Club.

---

## Face in the crowd — is it you?



In all future editions of this Season's programme we shall publish a photograph of a small section of the crowd at a previous match, one member of which will be clearly indicated by means of a circle. This person will be entitled to a free seat at the next match on producing the programme at the office.



## DON ROGERS SPORTS

**29 FARINGDON ROAD SWINDON**

Telephone 27378

Main suppliers to Swindon Town Football Club

Stockists of

**All leading makes of Football Boots and Clothing  
Table Tennis, Badminton, Rugby and Hockey equipment**

IN FACT THE COMPLETE SPORTS OUTFITTER

## RIMES of SWINDON

SPECIAL FOOTBALL EXCURSION

			Fare	
			adult	child
Saturday, Sept. 20th	Q.P.R.	Dept. 0900 hrs.	16/-	11/-
SERVICE DIRECT TO THE GROUND				
ALL SEATS NUMBERED AND RESERVED				

Book now at

**102 Commercial Rd., Swindon**      **46 Cricklade St., Cirencester**  
Telephone 27113      Telephone 3479

or with any of Rimes Booking Agents

*Dobell Shearman & Co. Ltd.*

**HIGH STREET SWINDON**

Telephone 4961

**FANCY and COMMERCIAL STATIONERS**  
**TYPEWRITERS and OFFICE EQUIPMENT**

Greetings Cards for all Occasions  
from Leading Art Publishers



## W. J. CASTLE

Office and Bakery

**4 and 5 MARKET STREET  
SWINDON**

Telephone 22017

Specialists—

BIRTHDAY CAKES - WEDDING CAKES  
DAIRY CREAM - PASTRIES  
BUNS - ROLLS - SPONGES





## Fixture List – Division I I

### 1969

#### August

9 Blackburn Rovers	(A)	0—2
13 Cardiff City	(A)	2—2
16 Carlisle United	(H)	2—2
19 Cardiff City	(H)	2—1
23 Aston Villa	(A)	2—0
30 Charlton Athletic	(H)	5—0

#### September

2 League Cup (2)	(A)	3—1
6 Blackpool	(A)	2—3
13 Oxford United	(H)	.....
16 Middlesbrough	(A)	.....
20 Queen's Park Rangers	(A)	.....
24 League Cup (3)		
27 Leicester City	(H)	.....
30 Millwall	(H)	.....

#### October

4 Bolton Wanderers	(A)	.....
7 Carlisle United	(A)	.....
11 Sheffield United	(H)	.....
15 League Cup (4)		
18 Hull City	(H)	.....
25 Portsmouth	(A)	.....
29 League Cup (5)		

#### November

1 Norwich City	(H)	.....
8 Birmingham City	(A)	.....
15 Watford	(A)	.....
19 League Cup Semi-Final		
22 Huddersfield Town	(H)	.....
29 Preston North End	(A)	.....

### December

3 League Cup Semi-Final		
6 Bristol City	(H)	.....
13 Oxford United	(A)	.....
20 Blackpool	(H)	.....
26 Aston Villa	(H)	.....
27 Charlton Athletic	(A)	.....

### 1970

#### January

3 F.A. Cup (3)		
10 Queen's Park Rangers	(H)	.....
17 Leicester City	(A)	.....
24 F.A. Cup (4)		
31 Bolton Wanderers	(H)	.....

#### February

7 Sheffield United	(A)	.....
14 Blackburn Rovers	(H)	.....
21 Portsmouth	(H)	.....
28 Hull City	(A)	.....

#### March

7 Huddersfield Town	(A)	.....
14 Preston North End	(H)	.....
21 Bristol City	(A)	.....
28 Watford	(H)	.....
30 Norwich City	(A)	.....
31 Birmingham City	(H)	.....

#### April

4 Millwall	(A)	.....
11 F.A. Cup Final		
14 Middlesbrough	(H)	.....

## League Table – Division I I

(up to and including Tuesday, 9th September, 1969)

	P	W	D	L	F	A	P
Sheffield United	8	6	1	1	17	6	13
Leicester City	7	5	1	1	13	6	11
Queen's Park Rangers	7	5	1	1	17	8	11
Cardiff City	8	4	3	1	11	7	11
Blackburn Rovers	7	4	2	1	9	3	10
Huddersfield Town	7	4	1	2	12	8	9
Norwich City	8	4	1	3	7	7	9
Charlton Athletic	8	3	3	2	7	11	9
<b>Swindon Town</b>	<b>7</b>	<b>3</b>	<b>2</b>	<b>2</b>	<b>15</b>	<b>10</b>	<b>8</b>
Bolton Wanderers	7	3	2	2	12	7	8
Carlisle United	7	3	2	2	10	9	8
Hull City	8	3	1	4	7	9	7
Blackpool	7	3	1	3	9	13	7
Middlesbrough	8	3	1	4	7	12	7
Oxford United	6	3	0	3	7	7	6
Portsmouth	7	2	2	3	8	10	6
Preston North End	7	1	2	4	6	8	4
Birmingham City	7	1	2	4	6	11	4
Millwall	7	0	3	4	8	15	3
Bristol City	6	1	1	4	2	9	3
Aston Villa	7	0	2	5	3	10	2
Watford	7	0	2	5	2	9	2



## Hatton's Newsagency

A. J. D. & N. J. Woodhouse

Newsagents :: Tobacconists  
Confectioners

Agents for Wessex School of Motoring  
Booking Agents for Rimes Coaches

6 REGENT CIRCUS (near G.P.O.)  
Telephone Swindon 22731

## BRETTS

PET and GARDEN SUPPLIES

32-33 Commercial Road  
and  
6 Cromwell Street Swindon

## THE PORK SHOP

(Swindon Bacon Curing Co. Ltd.)

Specialists in

Bacon - Pork - Cooked Ham

50 FLEET STREET SWINDON  
Telephone 22122

## J. WILMER

Coal Merchants

St. Margaret's Road Swindon

Telephone 22535

## SOUTHERN LAUNDRY CO. LTD.

Launderers and Dry Cleaners

HAYDON STREET SWINDON  
Telephone 4161

At Your Service

## A. E. LUDLOW LIMITED

Wholesale Fruit and Potato Merchant

COLBOURNE STREET  
SWINDON WILTSHIRE  
Telephone Swindon 3583

We deliver Fresh Fruit, Vegetables  
and Potatoes daily—Wholesale Only

FOR ALL YOUR ANGLING NEEDS  
CONSULT

## Frank Woodward

Swindon's Fishing Tackle Specialist

25 HAVELOCK STREET SWINDON  
Telephone 3879

For Paints of Good Quality

## H. S. Hodges & Sons

(SWINDON) LTD.

Cricklade Road Swindon  
Telephone 22422

Dulux, Broiac, Valspar, Wallcharm, etc.

24 hour Delivery  
Service -

YOUR COMPLETE JANITORIAL SERVICE

## Wilts Cleaning Supply Service

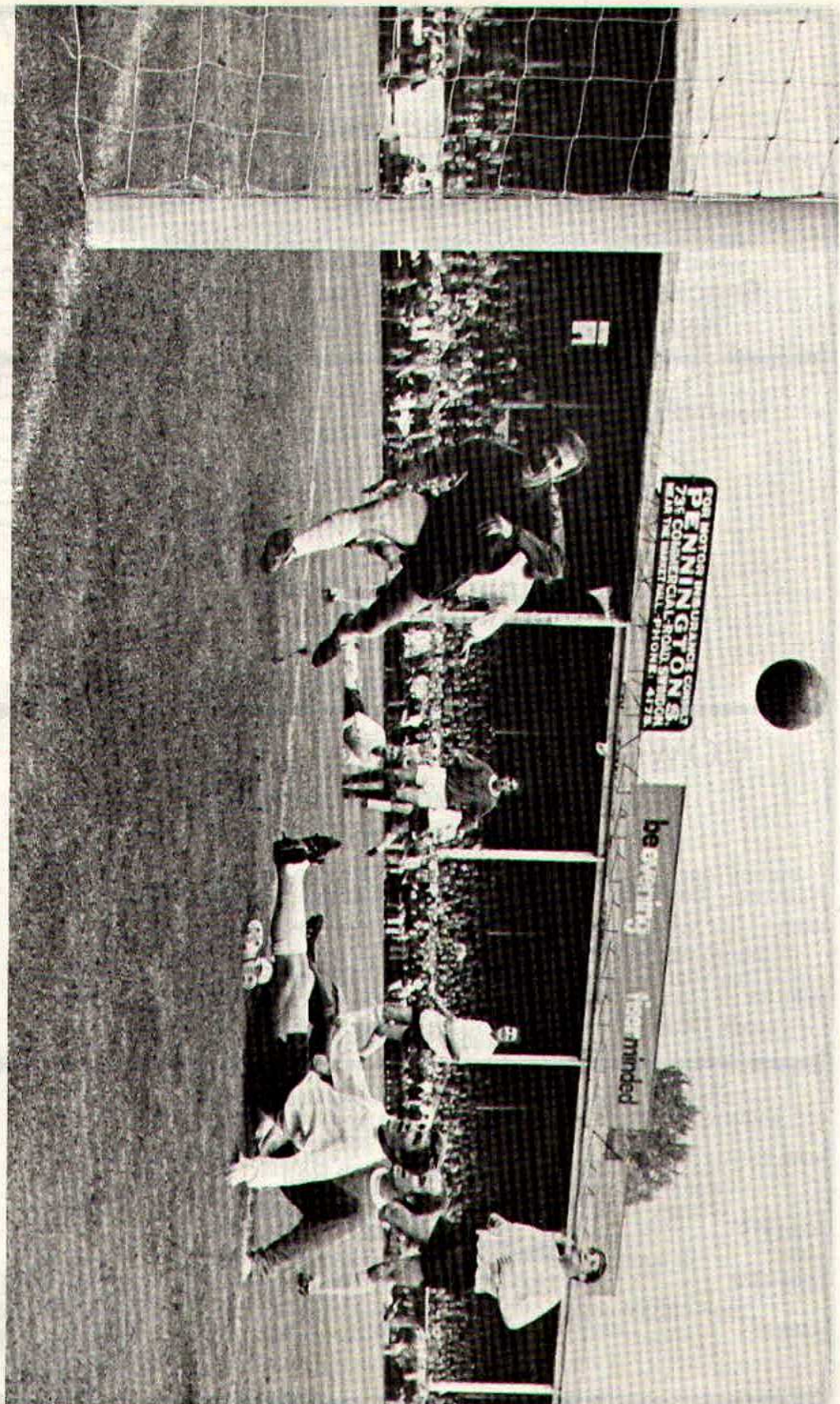
Kembrey Warehouse Rear 255 Cricklade Road  
SWINDON

Telephone 21012

Represented by G. ALEXANDER  
Telephone Swindon 27833



Peter Noble scoring Swindon Town's first goal against Charlton Athletic at the County Ground.



Photograph by R. Marsh.



## HARRY LUNN

(Ex NOTTS COUNTY, PORTSMOUTH and SWINDON TOWN F.C.)

**Fish Bar and Restaurant**  
**27-28 COMMERCIAL ROAD SWINDON**

RESTAURANT open 9 a.m. to 10 p.m. for

**Snacks - Lunches - High Teas - Evening Meal**

FISH BAR open Mid-day and Evenings until 11 p.m.

## HULFORD MOTORS LIMITED

**SELF DRIVE HIRE**

Fleet of 1969/8 Fords      Escorts De-Luxe  
Cortinas De-Luxe      Cortinas 1600 Estate  
(Bench Seat Column Change) — Zephyr V4s

**SHRIVENHAM ROAD**

(200 yards from Football Ground)

**Telephone 4934**

Large Car Park Available

## COWLEY BROS. (Wroughton) LTD.

BUILDERS OF MODERN ATTRACTIVE  
HOUSES and BUNGALOWS

Developments at

**SWINDON**

**WROUGHTON**

**BADBURY**

Office

**28 NEWPORT STREET**

**SWINDON**

Telephone Swindon 6870

Reserved for British Rail



**Inter-City**



# Key of the Board

## First Section

A—Burnley v. Arsenal  
 B—Chelsea v. Wolverhampton W.  
 C—Everton v. West Ham United  
 D—Manchester United v. Liverpool  
 E—Newcastle United v. Derby County  
 F—Nottingham Forest v. Southampton  
 G—Sheffield Wednesday v. Leeds United  
 H—Tottenham Hotspur v. Manchester C.  
 I—Albion v. Ipswich Town  
 J—Birmingham City v. Sheffield United  
 K—Cardiff City v. Leicester City  
 L—Huddersfield Town v. Blackpool  
 M—Hull City v. Bolton Wanderers  
 N—Middlesbrough v. Bristol City  
 O—Millwall v. Carlisle United  
 P—Norwich City v. Charlton Athletic  
 Q—Portsmouth v. Queen's Park Rangers  
 R—Preston N.E. v. Blackburn Rovers  
 S—Watford v. Aston Villa  
 T—Bournemouth & B.A. v. Torquay Utd.

## Second Section

A—Bradford City v. Luton Town  
 B—Bristol Rovers v. Fulham  
 C—Doncaster Rovers v. Tranmere Rovers  
 D—Gillingham v. Rochdale  
 E—Orient v. Brighton & Hove Albion  
 F—Plymouth Argyle v. Halifax Town  
 G—Stockport County v. Reading  
 H—Walsall v. Rotherham United  
 I—Aldershot v. Wrexham  
 J—Colchester United v. Crewe Alexandra  
 K—Exeter City v. Workington  
 L—Grimsby Town v. Scunthorpe United  
 M—Northampton Town v. Darlington  
 N—Peterborough United v. Lincoln City  
 O—Southend United v. Hartlepool United  
 P—York City v. Bradford



## Going by Car?

### MIDDLESBROUGH

Tuesday, 16th September, 1969

### SWINDON to MIDDLESBROUGH . . .

Leave by Shrivenham Road via Highworth, Lechlade, Burford to **Chipping Norton**. **31½ miles**

Leave by Banbury Road via Bloxham to **Banbury**. **44 miles**

Leave Banbury via South Bar Street and North Bar Street on the Southam Road (A423) follow signs to Rugby via Southam, Dunchurch (A426) continue to **Rugby**. **69 miles**

Leave Rugby via Newbold Road, Gibbet Hill (A426), cross A5 and at road junction turn right (A4114) for Motorway (M1). **76 miles**

Follow the Motorway to M18 Intersection, follow signs 'North, Doncaster M18' to A1 (M) Intersection, follow signs 'North, Doncaster' A1 (M) and continue to end of **Motorway**. **162 miles**

Take second road off roundabout on to A1 and follow road until junction with A168, turn right and follow signs to **Thirsk**. **214 miles**

Leave on A170 and join A19 ¼ mile on, continue to Cleveland Tontine on A172 to **Stokesley**. **233 miles**

Follow A172 to Ayresome Park Ground via Marton Road, Linthorpe Road. **Middlesbrough**. **244 miles**





Suppliers to the Swindon Team  
**MAY WE SUPPLY YOU?**



**EARLE**

of Chippenham Limited

MAIN

**FORD**

DEALERS

**COCKLEBURY ROAD CHIPPENHAM**

Telephone 3255

**H. HIBBERD LIMITED**

**FOR YOUR EARTH-MOVING EQUIPMENT**

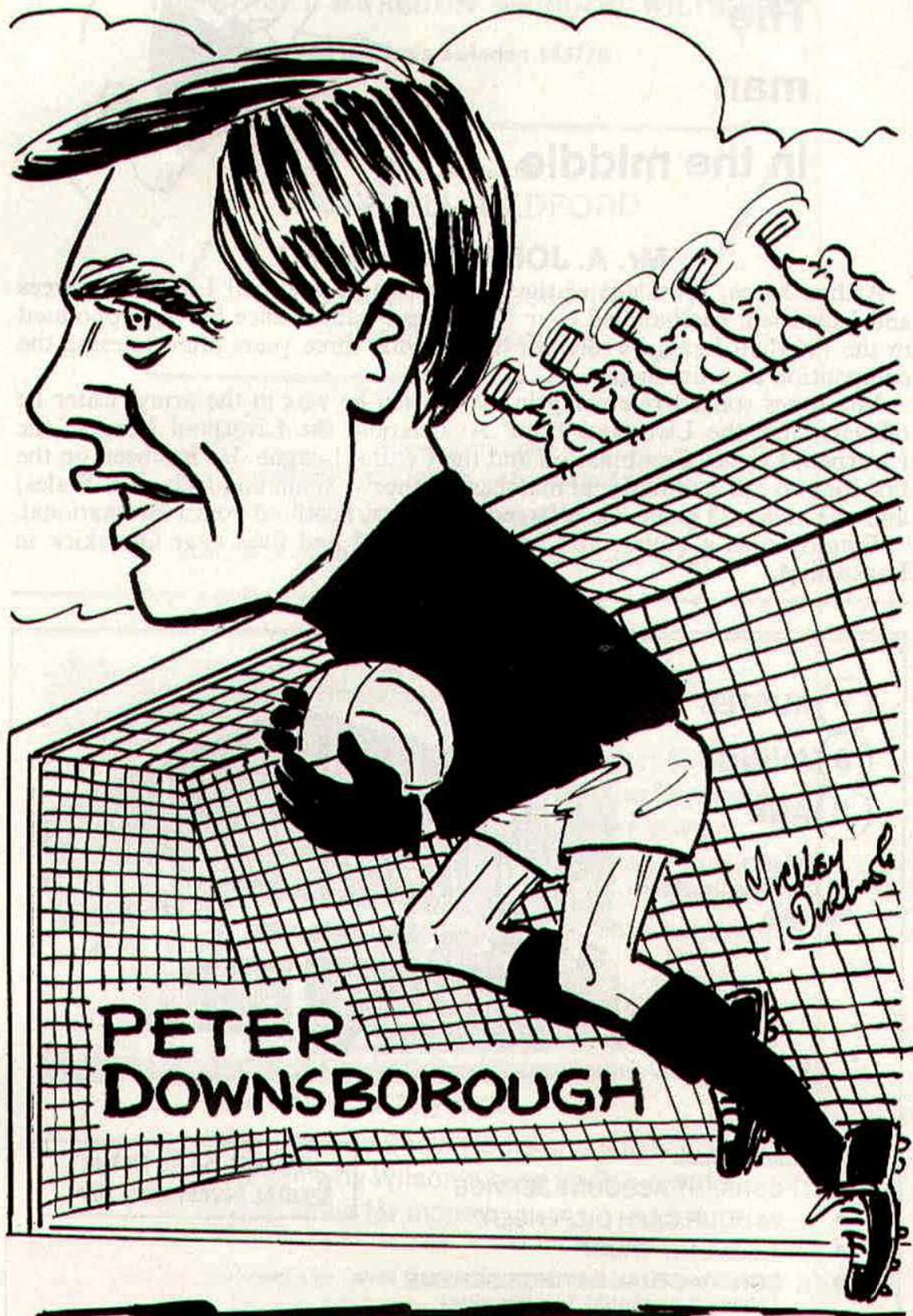
*Plant Hire Contractors*



**40 NEWPORT STREET SWINDON**

Telephone Swindon 6125





**PETER  
DOWNSBOROUGH**

*J. Kelly*



# The man in the middle



## Mr. A. JONES (Ormskirk)

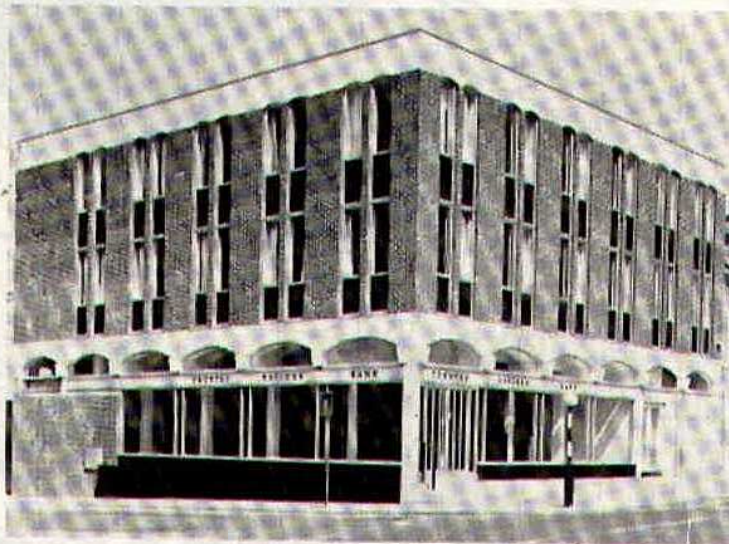
Arthur Jones, President of the Association of Football League Referees and Linesmen, has handled over 150 League games since he was appointed to the Football League's referees list in 1962, three years after entering the competition as a linesman.

Mr. Jones started refereeing in 1950 when he was in the army. Later he officiated for the Liverpool Boys' Association, the Liverpool League, the Liverpool County Combination and the Central League. He has been on the line for two full international matches (France v. Spain and Ireland v. Wales) and one under-23 game. He refereed a Wales v. Scotland youth international.

Employed as a buyer, Mr. Jones is married and lives near Ormskirk in Lancashire.

**T** RUSTEE  
**S** AVINGS  
**B** ANK

93 Commercial Road  
Swindon



### Facilities include

- CURRENT ACCOUNT SERVICE
- 24 HOUR CASH DISPENSER
- T.S.B. UNIT TRUST
- CONTRACTUAL SAVINGS SCHEME  
(giving substantial Tax benefits)

**INTEREST 6½% IN THE  
SPECIAL INVESTMENT DEPT.**



---

# AKERS GARAGE LIMITED

THE STREET MOREDON SWINDON WILTSHIRE

Telephone Swindon 3457/8

main dealer for  
**VAUXHALL/BEDFORD**  
and  
Parts and Accessories  
Sales and Service

Showrooms open  
MONDAY to FRIDAY — 8 a.m. to 8 p.m.  
SATURDAY — Closed 7 p.m.  
SUNDAYS — 10 a.m. to 2 p.m. for Petrol and Viewing

---

---



MODERN LIVING IN EXPERIENCED HANDS

Wilson homes are the result of over 60 years experience in house building. The Company Architect and his design team are always researching into the ever changing requirements of home buyers, to give them better designed homes, which are easy to run, easy to maintain and comfortable to live in.



All our houses and bungalows are built to the stringent specification of the National House Builders Registration Council who will guarantee your home for 10 years.

Visit a Wilson Show Home and you will see for yourself why Wilson's have such a reputation in giving value for money.

**WILSON**

(Swindon) LTD., 90-92 Commercial Road, Swindon Telephone 6361 (3 lines)

---



## seating manufacturers for Stadium Seats Ltd

- \* Heavy, medium and light steel fabrication
- \* Custom made production line equipment
- \* Ancillary work for industry and the building trade

FAST EFFICIENT SERVICE BY



**MARTYN LYNSHAW LTD**

BOUNDARY WORKS - STRATTON ROAD - SWINDON - WILTS

Telephone 21844

## spectator seating in high density polyethylene

- \* Supplied to over 36 Football League clubs
- \* Any colour. No maintenance
- \* Industrial seats for the food, electronics and pharmaceutical industries
- \* Largest supplier of spectator and industrial seating in Europe

**STADIUM SEATS LTD**

STRATTON ROAD - SWINDON - WILTS Telephone 21844